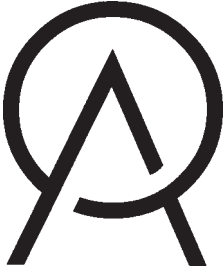


**OCTORARO ANGUS
GENETIC SEED SAVER
SALE**

**SATURDAY, NOVEMBER 12TH, 2011
AT THE FARM ~ BREEZEWOOD, PA**



OCTORARO ANGUS GENETIC SEED SAVER — SALE —

November 12th, 2011 - 12:30 pm
AT THE FARM ~ BREEZEWOOD, PA

TERMS & CONDITIONS: Terms are Cash. All purchases are to be settled for on sale day, unless prior arrangements have been made. The cattle sell under the standard terms and conditions as adopted by the American Angus Association.

HERD HEALTH: All cattle will be accompanied with proper health certificates for immediate interstate shipment. The herd is certified and accredited and certified Johnes free.

SCHEDULE: You are invited to inspect the sale offering anytime prior to the sale. Please call to arrange a suitable time.

SALE DAY: Cattle will be on display in grass paddocks on the farm. However, cattle will not be run through a sale ring at the time of sale. We urge you to come early in order that you have adequate time to review the sale offering and make your selections. It is recommended that you take the opportunity to walk through the herd, where you will find daughters, dams, siblings and several sires of the sale offering.

CONFERENCE CALLING: Will be available on sale day if you are unable to attend. Please call to make phone arrangements or to request a video of the sale cattle.

TRANSPORTATION: Transportation will be available on sale day. See Sam Wylie to arrange your trucking needs.

MAIL BIDS: Mail bids will be accepted. Please contact the following:
A. Jack Downin, PA #AU002398-L 301/582-2794
Sam Wylie, Octoraro Angus 814/784-3811

www.octoraroangus.com
octoraro@nb.net

OCTORARO ANGUS

Sustainable Genetics – Sustainable Agriculture

The future is now

As you read this, you will see that things have pretty much remained status quo at Octoraro Angus this year. As they look toward retirement, the pasture lands that join their daughter Beth's Octoraro Epiphany Place farm have been partially fenced, the house renovations continue and eventually they plan to move. This summer they had the privilege to return to Montana with sale consigners, Rick and Barbara Emerick from Em Brook Angus. While there they visited Shoshone Angus, Saddle Butte and Horse Butte ranches. Otherwise, you will see few changes to this introduction to Octoraro Angus. A third generation Angus breeder, Sam has carved a niche in the competitive world of beef cattle breeding. After serving in Vietnam, Sam traveled though out the U.S., visiting Angus breeders, selling semen and doing sale preparation work, before starting his own breeding program in Chester County, PA.

In 1990, Sam moved the cattle to a rugged, 153-acre farm in Mattie, near Breezewood. The grassy hillsides are ideal for intensive rotational grazing and the woods provide winter shelter. Hay is made on neighboring farms to support the 200 head of Angus through the winters. Approximately 70 -80 calves are produced annually through natural cover and artificial insemination. After moving to Bedford County Sam met Sherrill, a local woman with a Guernsey dairy background. The first public sale of Octoraro Angus females was held in 1994. Sam and Sherrill married in 1996 and have worked together producing a unique sustainable herd of pure pedigree Angus cattle.

The Wylies breed cattle from a different angle than most breeders today. The cattle survive on pasture and hay year-round without supplementation from corn, grains or concentrates – because their breeding is based on pure foundation bloodlines. The Wylies value traits, such as, maternal efficiency and longevity, which they believe has been lost in many modern breeding programs that emphasize meat production at the expense of these characteristics. Sam and Sherrill got back to the basics and raise cattle that thrive on low-input, sustainable grassland farming. Minimal fuel and equipment is used to process the hay.

Their breeding practices have found a wide market, with their time-tested seed stock sought by Angus breeders throughout the United States. They are breeding producer-friendly cattle for farmers who want to get back to the pure, breeder-type Angus of long ago. Tallgrass Beef Company Preferred Genetics added Octoraro Angus to their list of acceptable genetics, in 2007. This distinction was attributed to the Octoraro Angus cattle being bred for

maternal efficiency and longevity. In 2008 they were named Seed Stock Producer of the Year by the Pa. Angus Association and the Pa. Cattlemen's Association.

Years ago Jim Lingle, while at Wye Plantation, mentored Sam, causing him to believe in the goodness of the Wye maternal program. The Wylies purchased the rare, unique gene poll of the Newport Farm Wye based cattle in 2005. They have not made radical changes in these cows, but have bred them to be more consistent and predictable by utilizing semen from the old time tested Wye bulls. Some of the progeny of these animals are being offered in their 2010 sale. Sam feels fortunate to have been mentored through the years by some of the best breeders in the nation, which instilled in him his values and goals. His main goal continues to be preserving the maternal goodness and purity of the Angus breed. Through this type of disciplined breeding program the Wylies are able to share both the Wye genetics and their own homebred gene pool. Sam enjoys mentoring the next generation of breeders.

Years ago Sam coined the term, *Genetic Seed Saver*, as the title for their sale. The term sums up what Octoraro Angus is all about: preserving the original, traditional type of Angus cattle. They have not perused the modern, high tech, scientific improvement process that so many have engaged in here in the USA. Sam says that breeding cattle is an art, which should also be used for genetic damage control. They refer to their style of breeding as pure-breeder type. They do not expect their cattle to be everything to everybody. They have concentrated on the cow, maternal efficiency and least cost production, rather than the terminal growth and carcass traits that are often antagonistic to what they are trying to accomplish.

The Wylies take their job as your seedstock supplier seriously. They do not continuously outcross their gene pool for bigger, better numbers. Through linebreeding and tight breeding they feel that they can bred more predictability, consistency and prepotency into their female lines. With the turmoil surrounding genetic defects in the Angus bred this past year, and the possibility of more coming, they are pleased that there appears to be no need for genetic testing within their gene pool. They believe that it is their job to design and create females that will work for the long haul, up to twenty years of age. Sam has often jokingly said, "There is only one thing we need more of in Angus cattle and that is more Angus."

For the third year the sale includes consignments from Octoraro Epiphany Place, New Paris, PA, and Em Brook Farm, Schellsburg, PA. These cattle reflect pure breeder type genetics and have been developed under low input production models, similar to ours. Many of these cattle descend from cows that were purchased from us and continue the same great bloodlines.

Come early on Saturday, November 12, 2011, to view the sale offering. The entire 2007 crop of Octoraro Angus spring calving females and fall calving cows will be offered this year. This is an excellent set of cows that are truly maternal and trouble free foundation genetics. A complimentary lunch will be served at 11:30 a.m. The cattle will not go through a traditional sale ring. The sale will start promptly at 12:30 p.m.in the tent. Sam and Sherrill look forward to welcoming you to their **“Sixteenth Genetic Seed Saver Sale”**.

The Wylies would also like to take this opportunity to thank you, their valued customers, friends, family and neighbors for your continued interest in and support of their program. They sincerely believe that as they continue their lives’ work that they are being guided by a great power from above, for which they are very thankful.

www.octoraroangus.com
octoraro@nb.net
814-784-3811

Rick, Barb, Sam, and Sherrill with Longhorn Saddle Steer at Horse Butte Ranch - Two Dot, Montana



Embrook 106 Bull, a Wai Group 4197 son, that was working at Saddle Butte Ranch when we visited Dennis and Erika this early August.

Octoraro Spring Calving Cows

~ All calves are retained. ~

Octoraro Queen Missie 701

Cow 15955098 TATTOO 701 04/08/2007

Pinebank Waig 31/95	Pinebank Waig 5/93
Pinebank Waigroup 41/97	Pinebank Waig 58/93
Pinebank 639/88	Tupurupuru 838/86
	Pinebank 663/85
Octoraro Emulation 310	Emulation 31
Octoraro Queen Missie 326	Octoraro Delia 310
Octoraro Queen Missie 111	O C C Galileo 754G
	Octoraro Queen Missie 718

Octoraro Queen Missie 701 is a daughter of the Pinebank Wye Group 41/97 New Zealand grass based genetics that have done a commendable job in our program. 701 is a beautiful, functional, efficiency type female that is following right along in her mother's footsteps. The mother is our 326 Pathfinder cow that is quickly advancing to the top position in our program. She was observed bred on 8/1/211 to the Embassy 203 bull 16255674.



Octoraro Queen Missie 701



Octoraro Lottie 703

Cow 15959130 TATTOO 703 04/11/2007

Fahren of Wye Umf 5830	Fenland of Wye
Codova of Wye UMF 8332	Florelle of Wye Umf 5229
Clova of Wye Umf 7697	Carty of Wye Umf 6952
	Clova of Wye Umf 6767
Furuno of Wye UMF 8522	Campton of Wye UMF 8207
Newports Lottie 83	Flora of Wye Umf 7474
Newports Miss Pride 20	Favour of Wye
	Janastci Lyke Regal 931

Octoraro Lottie 703 is another direct daughter of Codova going back to the good Favour 20 cow. 703 is dry this summer and should calf in April or May to Earl 326 16852068.

Octoraro Flora 704

Cow 16039979 TATTOO 704 04/06/2007

Lodge of Wye
Favour of Wye
Florilla of Wye

Career of Wye
Lorena of Wye

Valour of Ardrass
Pamela G of Wye

Fahren of Wye Umf 5830
Flora of Wye UMF 8706
Flora of Wye Umf 6873

Fenland of Wye
Floreille of Wye Umf 5229

Anchor of Wye Umf 6455
Flora of Wye Umf 6527

Octoraro Flora 704 is a direct daughter of Favour of Wye, the famous female sire at Wye Plantation. This is strictly a maternal pedigree and we have her rebred to the good Cedric of Wye bull 14794513 on 7/1/11.



Rick Emerick, Dennis Voss, Sam Wylie



Octoraro Delia 706

Octoraro Delia 706

Cow 15959132 TATTOO 706 04/13/2007

Fahren of Wye Umf 5830
Codova of Wye UMF 8332
Clova of Wye Umf 7697

Fenland of Wye
Floreille of Wye Umf 5229

Carty of Wye Umf 6952
Clova of Wye Umf 6767

Octoraro Allegheny 203
Octoraro Delia 423
Octoraro Delia 202

O C C Anchor 771A
Octoraro Gammer 203

D H D Traveler 6807
Octoraro Delia 723

Octoraro Delia 706 is an attractive young female that is doing a good job with her heifer calf this year. She is a Codova out of a linebred Delia female. 706 was bred on 7/1/11 to our old Emulation 310 12975036.

Octoraro Delia 708

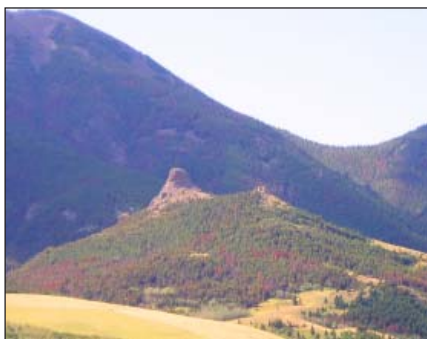
Cow 15941163 TATTOO 708 04/11/2007

	R R Rito 707
PBC 707 1M F0203	Evocate Princess T
Octoraro Rito 503	
Octoraro Delia 503	Emulation 31
	Octoraro Delia 310
	Shoshone Echo 1702
BAX Elite 16-4182	Eileen Rainmere of K L S
Octoraro Delia 302	
Octoraro Delia 454	Octoraro Stackalong 305
	Octoraro Delia 723

Octoraro Delia 708 is a good solid, hardworking, young cow that is by our Hammer bull and is double bred to our good productive Delia cow family. We have this cow serviced on 7/3/11 to Octoraro Emulation and then cleaned up 7/22/11 to Octoraro Embassy 128 16842775.



Octoraro Delia 708



A picture of the Saddle Butte at Saddle Butte Ranch in Gyser, Montana.

Octoraro Delia 709

Cow 15941164 TATTOO 709 04/22/2007

	Foremost of Wye
Fabron of Wye	Matilda G of Wye
Octoraro M F Fabron 152	
Octoraro Delia 503	Emulation 31
	Octoraro Delia 310
	Shoshone Echo 1702
BAX Elite 16-4182	Eileen Rainmere of K L S
Octoraro Delia 303	
Octoraro Delia 454	Octoraro Stackalong 305
	Octoraro Delia 723

Octoraro Delia 709 a young female that has excelled in our program and is by our good Fabron son. She is double bred to our Delia cow family. Remember that Shoshone Viking was a triple Fabron, so 709 is tight bred to Viking and Fabron. This is a really nice young cow that we bred 7/1/11 to Emulation 310 with a clean up date of 7/21/11 to Octoraro Embassy 128 16842775.

Octoraro Gammer 710

Cow 15941160 TATTOO 710 06/06/2007

Fabron of Wye	Foremost of Wye
Octoraro M F Fabron 152	Matilda G of Wye
Octoraro Delia 503	Emulation 31
	Octoraro Delia 310
Octoraro Emulation 310	Emulation 31
Octoraro Gammer 414	Octoraro Delia 310
Octoraro Gammer 229	Octoraro Addison 203
	Octoraro Gammer 001

Octoraro Gammer 710 is also by the Fabron son and doubled up to the Delia family. There are good females and a very good Momma behind this cow, we will get her preg checked for a spring calf.



Octoraro Delia 711



Ballot 5 Bull Calf on 711

Octoraro Delia 711

Cow 15941154 TATTOO 711 04/13/2007

Emulation 31	F C R Elation Lad 652
Octoraro Emulation 310	Miss Emulous 243
Octoraro Delia 310	Shoshone Viking GD60
	Octoraro Delia 810
O C C Emblazon 854E	D H D Traveler 6807
Octoraro Delia 507	Dixie Erica of C H 1019
Octoraro Delia 114	O C C Galileo 754G
	Octoraro Delia 862

Octoraro Delia 711 is the first of the old Emualtion 310 daughters to be offered: she is a fine one. While a little smaller and frailer in stature, she is probably the best uddered female in the offering. 711 is very efficient and doing an outstanding job with this year's bull calf. We have her rebred to the Sinclair Emulation 5522 XP 15696693. We think the XP bull will work well in our program.

Octoraro Queen Missie 712

Cow 15941155 TATTOO 712 04/03/2007

Emulation 31	F C R Elation Lad 652
Octoraro Emulation 310	Miss Emulous 243
Octoraro Delia 310	Shoshone Viking GD60
	Octoraro Delia 810
Octoraro Addison 203	O C C Anchor 771A
Octoraro Queen Missie 517	Octoraro Gammer 203
Octoraro Queen Missie 132	Octoraro Addison 203
	Octoraro Queen Missie 909

Octoraro Queen Missie 712 another Emulation 310 daughter is out of a double bred Addison cow out of the Queen Missie tribe. She is an easy keeping cow with extra volume and capacity, nice udder and does a good job raising her calves. We have her rebred on 7/2/11 to the Sinclair XP 15696693.



Ritolation 301 daughter of 712



Octoraro Miss Wix 713

Octoraro Miss Wix 713

Cow 15941156 TATTOO 713 04/16/2007

Emulation 31	F C R Elation Lad 652
Octoraro Emulation 310	Miss Emulous 243
Octoraro Delia 310	Shoshone Viking GD60
	Octoraro Delia 810
Octoraro Emulation 310	Emulation 31
Octoraro Miss Wix 416	Octoraro Delia 310
Octoraro Miss Wix 148	Hodge Redefine 68
	Octoraro Miss Wix 938

Octoraro Miss Wix 713 is a double bred daughter of Emulation 310., Her mother was a fine cow that went to Embrook a couple of years ago. This cow has done us a lot of good. 713 blemished her record a couple of years back by having twins: both were heifers and are now bred. This is a beautiful productive, young cow that does not have anything terminal about her: strictly maternal efficiency locked in. We have her bred on 7/3/11 to the good Sinclair XP 15696693.

Octoraro Miss Wix 714

Cow 15941157 TATTOO 714 04/03/2007

Emulation 31	C R Elation Lad 652
Octoraro Emulation 310	Miss Emulous 243
Octoraro Delia 310	Shoshone Viking GD60
	Octoraro Delia 810
O C C Eureka 865E	O C C Backstop 888B
Octoraro Miss Wix 505	Blackbird of R R 1204
Octoraro Miss Wix 207	O C C Emblazon 854E
	Octoraro Miss Wix 803

Octoraro Miss Wix 714 is a daughter of our Emulation 310 bull, probably the most productive one. She is out of a double bred 6807 type female, good cows all the way back. 714 has done us a world of good. We have a nice bred yearling out of her by Jipsey Earl. Her Octoraro Ballot STO 6 bull calf is the top of this year's crop and he will definitely be used to continue our Ballot line in the future. She was serviced on 6/27/11 to the Sinclair 5522 XP 15696693.



Octoraro Miss Wix 714



Ballot 6 Bull Calf on 714

Octoraro Delia 715

Cow 15957965 TATTOO 715 04/17/2007

Emulation 31	F C R Elation Lad 652
Octoraro Emulation 310	Miss Emulous 243
Octoraro Delia 310	Shoshone Viking GD60
	Octoraro Delia 810
Shoshone Viking GD60	Franchester of Wye
Octoraro Delia 509	Shoshone Wendy D60
Octoraro Delia 151	Fabron of Wye
	Octoraro Delia 503

Octoraro Delia 715 is another beautiful and functional 310 daughter and is double bred to our good Delia cow family. This cow exemplifies the maternal efficiency and fertility of what we strive for in our low input grass based selection process. We have her rebred on 7/1/11 to the Sinclair XP 15696693.

Octoraro Gammer 716

Cow 15941158 TATTOO 716 04/29/2007

Emulation 31	F C R Elation Lad 652
Octoraro Emulation 310	Miss Emulous 243
Octoraro Delia 310	Shoshone Viking GD60
	Octoraro Delia 810
Octoraro Allegheny 203	O C C Anchor 771A
Octoraro Gammer 521	Octoraro Gammer 203
Octoraro Gammer 223	Octoraro Rito 054 203
	Octoraro Gammer 906

Octoraro Gammer 716 anther productive 310 daughter. This cow lost a nice heifer calf at birth which never got started breathing properly. She has not nursed this summer and is rebred for an April calf to the Octoraro Earl 326 16852068 from 7/21 – 8/30/11.



Octoraro Delia 715 from Previous Page



Ben Loyning, a young futuristic seed stock breeder from Montana.

Octoraro Gammer 717

Cow 15941161 TATTOO 717 03/29/2007

Emulation 31	F C R Elation Lad 652
Octoraro Emulation 310	Miss Emulous 243
Octoraro Delia 310	Shoshone Viking GD60
	Octoraro Delia 810
D D A Fahren 21X	Fahren of Wye Umf 5830
Octoraro Gammer 510	D D A Melisa 549
Octoraro Gammer 229	Octoraro Addison 203
	Octoraro Gammer 001

Octoraro Gammer 717 is by our old Emulation 310 bull and this will be one of the last natural calf crop serviced by him. In the future we will continue to use him on an A-I basis. She is a solid kind of working cow with a good clean pedigree and we have her rebred 7/2/11 to Sinclair XP, but there is 7/21/11 cleanup service to Octoraro Embassy 128 16842775.

Octoraro Delia 719

Cow 15941174 TATTOO 719 04/30/2007

	F C R Elation Lad 652
Emulation 31	Miss Emulous 243
Octoraro Emulation 310	
Octoraro Delia 310	Shoshone Viking GD60
	Octoraro Delia 810
	O C C Anchor 771A
Octoraro Addison 203	Octoraro Gammer 203
Octoraro Delia 413	
Octoraro Delia 320	D H D Traveler 6807
	Octoraro Delia 106

Octoraro Delia 719 is a line bred Delia, on the bottom side linebred 6807, a direct daughter of Octoraro 310. 719 has extra body capacity and fleshing ease, a very complete, productive cow out of an outstanding cow family. We have her bred on 7/2/11 to XP, but there is a cleanup date of 8/28/11 to Octoraro Embassy 203 16255674.



Octoraro Delia 719



Octoraro Delia 720

Octoraro Delia 720

Cow 15941181 TATTOO 720 04/28/2007

	F C R Elation Lad 652
Emulation 31	Miss Emulous 243
Octoraro Emulation 310	
Octoraro Delia 310	Shoshone Viking GD60
	Octoraro Delia 810
	D H D Traveler 6807
O C C Emblazon 854E	Dixie Erica of C H 1019
Octoraro Delia 401	
Octoraro Delia 860	PBC 707 1M F0203
	Octoraro Delia 503

Octoraro Delia 720 is also a daughter of our Emulation 310 bull, linebred to the Delia cow family. There is lots of production and goodness all the way back in the Delia family, linebred for prepotency and consistency. Her mother 401, one of the top selling cows a few years back and sold to Spring Valley Ranch in Nebraska and is doing an outstanding job. We have this cow serviced to the XP bull on 7/1/11 and a cleanup of 8/28/11 to Octoraro Embassy 203 16255674.

Octoraro Delia 721

Cow 15941176 TATTOO 721 03/27/2007

	Emulation 31	F C R Elation Lad 652
Octoraro	Emulation 310	Miss Emulous 243
	Octoraro Delia 310	Shoshone Viking GD60
		Octoraro Delia 810
	Octoraro Allegheny 203	O C C Anchor 771A
Octoraro	Delia 530	Octoraro Gammer 203
	Octoraro Delia 325	Octoraro Emulation 310
		Octoraro Delia 109

Octoraro Delia 721 is a good hardworking daughter of our old Emulation 310 out of a 310 granddaughter. Lots of good, solid hardworking cattle in this pedigree and this cow is no exception. She is service on 7/5/11 to our Octoraro Ballot STO 6 15521058.

Octoraro Queen Missie 722

Cow 15941180 TATTOO 722 04/05/2007

	Emulation 31	F C R Elation Lad 652
Octoraro	Emulation 310	Miss Emulous 243
	Octoraro Delia 310	Shoshone Viking GD60
		Octoraro Delia 810
	Octoraro Emulation 310	Emulation 31
Octoraro	Queen Missie 337	Octoraro Delia 310
	Octoraro Queen Missie 136	Octoraro Quartermaster 203
		Octoraro Queen Missie 811

Octoraro Queen Missie 722 is also a sire daughter sire mating of Emulation 310. 722 is another solid, hardworking cow here in the program. She has contributed greatly to our herd and was serviced 7/5/11 to our home raised Octoraro Ballot STO 6 15521058.

Octoraro Lottie 723

Cow 15941185 TATTOO 723 04/01/2007

	Emulation 31	F C R Elation Lad 652
Octoraro	Emulation 310	Miss Emulous 243
	Octoraro Delia 310	Shoshone Viking GD60
		Octoraro Delia 810
	Furuno of Wye UMF 8522	Campton of Wye UMF 8207
Newports	Laura 133	Flora of Wye Umf 7474
	Janastci Lyke Regal 931	Lyke of Wye Umf 7886
		Lottie of Wye Umf 6859

Octoraro Lottie 723 is a daughter of Emulation 310 doing a fine job. She is out of a straight Wye bred cow. 723 is bred back on 7/2/11 to the good Emulation 5522 XP 15696693.

Octoraro Clova 724

Cow 15941186 TATTOO 724 05/05/2007

	Emulation 31	C R Elation Lad 652
Octoraro	Emulation 310	Miss Emulous 243
	Octoraro Delia 310	Shoshone Viking GD60
		Octoraro Delia 810
	Furuno of Wye UMF 8522	Campton of Wye UMF 8207
Newports	Clara 131	Flora of Wye Umf 7474
	Clova of Wye UMF 8256	Bobade of Wye Umf 7631
		Clova of Wye Umf 6993

Octoraro Clova 724 is another Emulation 310 daughter out of a straight Wye bred female. 724 was dry this summer and should calve next spring in April or May to Earl 326 16852068.

Octoraro Clova 807

Cow 16255671 TATTOO 807 05/13/2008

	Pinebank Waigroup 41/97	Pinebank Waig 31/95
Octoraro	Embassy 860	Pinebank 639/88
	Octoraro Delia 860	PBC 707 1M F0203
		Octoraro Delia 503
	Furuno of Wye UMF 8522	Campton of Wye UMF 8207
Newports	Clova 82	Flora of Wye Umf 7474
	Clova of Wye UMF 8256	Bobade of Wye Umf 7631
		Clova of Wye Umf 6993

Octoraro Clova 807 is a daughter of our Embassy 860 bull. She lost her calf this spring. She will be preg checked before sale day. She should be carrying an April calf to the Octoraro Earl 326 16852068.

Octoraro Flora 922

Cow 16567791 TATTOO 922 04/03/2009

	Alap of Wye UMF 8329	Manning of Wye
Loast of	Wye UMF 8669	Alexina of Wye Umf 6968
	Lottie of Wye Umf 7087	Buchwald of Wye Umf 6029
		Lottie of Wye Umf 5748
	Newports Favour 18	Favour of Wye
Octoraro	Flora 608	Janastci Burgas Forte 17E
	Newports Florilla 14	Favour of Wye
		Janastci Burgas Forte 17E

Octoraro Flora 922 is a nice young heifer with a straight Wye pedigree by Loast. She will calf in April/May carrying a service to the Octoraro Earl 326 16852068.

Octoraro Miss Wix 925

Cow 16666796 TATTOO 925 04/05/2009

	C S U Rito 4114
Octoraro Rito 054 G D A R	Blackcap Forever 485 G D A R
Octoraro Ritolation 2503	
Octoraro Delia 503	Emulation 31
	Octoraro Delia 310
	O C C Anchor 771A
Octoraro Allegheny 203	Octoraro Gammer 203
Octoraro Miss Wix 617	
Octoraro Miss Wix 139	Hodge Redefine 68
	Octoraro Miss Wix 709

Octoraro Miss Wix 925 is a very attractive Ritolation daughter out of the good 617 cow. She will be preg checked for an April/May calf by Octoraro Earl 326 16852068.

Octoraro Gammer 926

Cow 16557134 TATTOO 926 04/02/2009

	Glanworth 903
Glanworth 159	Glanworth 950
Glanworth Waigroup 130-03	
Glanworth Waig 849	Glanworth Waigroup 635
	Glanworth Waigroup 611
	Pinebank Waig 31/95
Octoraro Pinebank Waigroup 41/97	Pinebank 639/88
Octoraro Gammer 620	
Octoraro Gammer 203	Rito 054 G D A R
	Octoraro Gammer 305

Octoraro Gammer 926 has $\frac{3}{4}$ New Zealand grass based genetics behind her through the Glanworth 130 bull. The dam was 620, one of the top selling cows in last year's sale. 926 goes back to the Gammer 203 cow that did us a world of good and lasted until a ripe old age. She will be preg checked before sale day and is hopefully bred for an April /May calf to the Octoraro Earl 326 16852068.

Octoraro Delia 929

Cow 16666788 TATTOO 929 04/03/2009

	C S U Rito 4114
Octoraro Rito 054 G D A R	Blackcap Forever 485 G D A R
Octoraro Ritolation 2503	
Octoraro Delia 503	Emulation 31
	Octoraro Delia 310
	Lambdin of Wye Umf 6278
Octoraro Bear of Wye Umf 6591	Blackbird of Wye Umf 6324
Octoraro Delia 627	
Octoraro Delia 301	Shoshone Viking GD60
	Octoraro Delia 503

Octoraro Delia 929 is a line bred Delia 503 and is by the good Ritolation bull out of a good Bear of Wye daughter. She will have a preg check on her for an April/May calf by the Octoraro Earl 326 16852068.

Octoraro Clova 934

Cow 16540773 TATTOO 934 05/15/2009

	Pinebank Waigroup 41/97	Pinebank Waig 31/95
Octoraro	Embassy 301	Pinebank 639/88
	Octoraro Delia 301	Shoshone Viking GD60
		Octoraro Delia 503
	Carter of Wye UMF 8138	Framework of Wye
Clova of Wye UMF 8666		Clova of Wye Umf 7931
	Clova of Wye Umf 6767	Leonid of Wye
		Clova of Wye Umf 5414

Octoraro Clova 934 is a granddaughter of the grand old Clova 6767 cow that did a tremendous job in the Wye herd. She is sired by our good Embassy 301 bull and should be calving in April/May to the Octoraro Earl 326 16852068.

Octoraro Delia 935

Cow 16540775 TATTOO 935 05/22/2009

	Pinebank Waigroup 41/97	Pinebank Waig 31/95
Octoraro	Embassy 301	Pinebank 639/88
	Octoraro Delia 301	Viking GD60
		Octoraro Delia 503
	Octoraro Addison 203	O C C Anchor 771A
Octoraro	Delia 511	Octoraro Gammer 203
	Octoraro Delia 105	O C C Anchor 771A
		Octoraro Delia 701

Octoraro Delia 935 is an Embassy 301 out of a double Anchor cow. She is an easy keeping female with lots of body capacity. 935 will be preg checked and should be bred for a spring calf to the Octoraro Earl 326 16852068.

Octoraro Miss Wix 937

Cow 16589424 TATTOO 937 04/10/2009

	PBC 707 1M F0203	Rito 707
Octoraro	Rito 503	Evocate Princess T
	Octoraro Delia 503	Emulation 31
		Octoraro Delia 310
	Octoraro Addison 203	O C C Anchor 771A
Octoraro	Miss Wix 228	Octoraro Gammer 203
	Octoraro Miss Wix 032	Octoraro Travelmaster 906
		Octoraro Miss Wix 702

Octoraro Miss Wix 937 is a "Hammer" daughter out of the good 228 cow and she will be preg checked for an April/May calf sired by Octoraro Earl 326 16852068.

Octoraro Fall Calving Cows

Octoraro Delia 628

Cow 15599014 TATTOO 628 04/04/2006

Lambdin of Wye Umf 6278	Addison of Wye Umf 5853
Bear of Wye Umf 6591	Lottie of Wye Umf 5868
Blackbird of Wye Umf 6324	Lyons of Wye Umf 5877
	Blackbird of Wye Umf 5841
	Shoshone Echo 1702
BAX Elite 16-4182	Eileen Rainmere of K L S
Octoraro Delia 303	
Octoraro Delia 454	Octoraro Stackalong 305
	Octoraro Delia 723

Octoraro Delia 628 is a direct Bear of Wye daughter out of our very productive Delia family. 628 is a top cow but probably was stressed by the late summer heat of 2010 and shuffled back into the fall group. She is bred to calve by late October natural service to our good Octoraro Ritolation 301 16666794. Bull calf born 10/20.



Octoraro Delia 628



Octoraro Delia 804

Octoraro Delia 804

Cow 16265855 TATTOO 804 04/03/2008

	R R Rito 707
PBC 707 1M F0203	Evocate Princess T
Octoraro Rito 503	
Octoraro Delia 503	Emulation 31
	Octoraro Delia 310
	Emulation 31
Emulation N Bar 5522	Ankony 8F78 Lass 8F275
Octoraro Delia 404	
Octoraro Delia 503	Emulation 31
	Octoraro Delia 310

Octoraro Delia 804 is a beautiful young cow that slipped back to the fall group. She is double bred to our good Delia cow family. She is actually a double granddaughter of our old foundation 503 cow. 804 is sired by the Octoraro Rito 503, that was the bull that we called "Hammer". Her dam was out of our feature cow a few years back, the 404 Delia cow that went to Sinclair and entered their flush program: half interest sold for \$10,000. This is a very elite, young female that is bred to calve before sale time by early November. She is bred to another linebred bull, Octoraro Ritolation 301 16666794. Real top cow here.

Octoraro Miss Wix 805

Cow 16265856 TATTOO 805 04/10/2008

	PBC 707 1M F0203	R R Rito 707
Octoraro	Rito 503	Evocate Princess T
	Octoraro Delia 503	Emulation 31
		Octoraro Delia 310
	Octoraro Emulation 310	Emulation 31
Octoraro	Miss Wix 416	Octoraro Delia 310
	Octoraro Miss Wix 148	Hodge Redefine 68
		Octoraro Miss Wix 93

Octoraro Miss Wix 805 is a maternal sister to the good 713 spring calving cow that is in the sale. They have the same dam, Miss Wix 416, a very pleasing daughter of our old Emulation 310 bull. This heifer is also sired by the "Hammer" bull. 713 has a moderate frame, lots of capacity and a very pleasing udder. She was bred natural service to calve before sale time to the Octoraro Ritolation 301 16666794.



Octoraro Miss Wix 805



Octoraro Delia 810

Octoraro Delia 810

Cow 16255676 TATTOO 810 04/29/2008

	Pinebank Waigroup 41/97	Pinebank Waig 31/95
Octoraro	Embassy 860	Pinebank 639/88
	Octoraro Delia 860	PBC 707 1M F0203
		Octoraro Delia 503
	Octoraro Addison 203	O C C Anchor 771A
Octoraro	Delia 227	Octoraro Gammer 203
	Octoraro Delia 503	Emulation 31
		Octoraro Delia 310

Octoraro Delia 810 is another moderate framed full figured, very attractive type young female. She is double bred to the Delia cow family a direct daughter of our Delia 227 flush cow. She was sired by the Embassy 860 bull. She should calve by late October or early November to the Octoraro Ritolation 301 16666794.

Octoraro Queen Missie 816

Cow 16255688 TATTOO 816 05/12/2008

	Pinebank Waigroup 41/97	Pinebank Waig 31/95
Octoraro	Embassy 860	Pinebank 639/88
	Octoraro Delia 860	PBC 707 1M F0203
		Octoraro Delia 503
	Octoraro Allegheny 203	O C C Anchor 771A
Octoraro	Queen Missie 531	Octoraro Gammer 203
	Octoraro Queen Missie 326	Octoraro Emulation 310
		Octoraro Queen Missie 111

Octoraro Queen Missie 816 is a daughter of our Embassy 860 bull out of an awfully good, strong cow family going back to our Queen Missie 326. She is a Pathfinder cow that we used in our flush program. She is close to calving within the next few weeks to the good Octoraro Ritolation 301 16666794.



Octoraro Queen Missie 816



Octoraro Flora 819

Octoraro Flora 819

Cow 16255691 TATTOO 819 04/23/2008

	Ballot of Belladrum	Paragon of Haymount
Octoraro	Ballot STO 6	Bedelia Maid of Belladrum
	Octoraro Gammer 203	Rito 054 G D A R
		Octoraro Gammer 305
	Alap of Wye UMF 8329	Manning of Wye
Octoraro	Flora 609	Alexina of Wye Umf 6968
	Newports Flora 17	Favour of Wye
		Janastci Logan Pride 29E

Octoraro Flora 819 is a daughter of Octoraro Ballot S 6 bull, out of a straight Wye bred cow. Some good productive females are in this cow's family and she will be calving later this month to Octoraro Ritolation 301 16666794.

Octoraro Lottie 825

Cow 16255701 TATTOO 825 04/27/2008

	Ballot of Belladrum	Paragon of Haymount
Octoraro	Ballot STO 10	Bedelia Maid of Belladrum
	Octoraro Gammer 203	Rito 054 G D A R
		Octoraro Gammer 305
	Fahren of Wye Umf 5830	Fenland of Wye
Octoraro	Lottie 545	Florelle of Wye Umf 5229
	Lottie of Wye UMF 8464	Aver of Wye UMF 8202
		Lottie of Wye UMF 8196

Octoraro Lottie 825 is a nice, clean pedigreed cow, sired by our Ballot 10 bull out of a straight Wye bred Fahren daughter. This is a pleasing kind of cow that is bred to hopefully, calve by sale day to the Octoraro Ritulation 301 16666794.

Octoraro Delia 827

Cow 16255705 TATTOO 827 04/11/2008

	Ballot of Belladrum	Paragon of Haymount
Octoraro	Ballot STO 10	Bedelia Maid of Belladrum
	Octoraro Gammer 203	Rito 054 G D A R
		Octoraro Gammer 305
	Octoraro Addison 203	O C C Anchor 771A
Octoraro	Delia 540	Octoraro Gammer 203
	Octoraro Delia 814	Shoshone Bart 1012
		Octoraro Delia 523

Octoraro Delia 827 is a daughter of the Ballot S 10 bull and is out of a good productive Delia cow family. She is close to calving to the Octoraro Ritulation 301 16666794.

Octoraro Delia 904

Cow 16540551 TATTOO 904 04/04/2009

	Ballot of Belladrum	Paragon of Haymount
Octoraro	Ballot STO 6	Bedelia Maid of Belladrum
	Octoraro Gammer 203	Rito 054 G D A R
		Octoraro Gammer 305
	Octoraro Rito 503	PBC 707 1M F0203
Octoraro	Delia 708	Octoraro Delia 503
	Octoraro Delia 302	BAX Elite 16-4182
		Octoraro Delia 454

Octoraro Delia 904 is a daughter of Ballot S 6 out of a "Hammer" daughter that is in the sale this year, the spring calving Delia 708. This young 2½ year old will calve before sale day to the Octoraro Emulation 505 16540617.

Octoraro Flora 923

Cow 16567792 TATTOO 923 04/14/2009

	Alap of Wye UMF 8329	Manning of Wye
Loast of Wye UMF 8669	Lottie of Wye Umf 7087	Alexina of Wye Umf 6968
		Buchwald of Wye Umf 6029
		Lottie of Wye Umf 5748
		Manning of Wye
Octoraro Flora 609	Alap of Wye UMF 8329	Alexina of Wye Umf 6968
	Newports Flora 17	Favour of Wye
		Janastci Logan Pride 29E

Octoraro Flora 923 is a double granddaughter of the good maternal Alap of Wye bull. She was sired by Loast of Wye and goes back to our fine old Flora 17 Favour daughter. This fall she will be calving as a 2½ year old and was serviced by the Octoraro Emulation 505 16540617.

Octoraro Blackbird 932

Cow 16567907 TATTOO 932 04/08/2009

	Alap of Wye UMF 8329	Manning of Wye
Loast of Wye UMF 8669	Lottie of Wye Umf 7087	Alexina of Wye Umf 6968
		Buchwald of Wye Umf 6029
		Lottie of Wye Umf 5748
		Favour of Wye
Octoraro Blackbird 639	Newports Favour 18	Janastci Burgas Forte 17E
	Blackbird of Wye UMF 8765	Albay of Wye UMF 8331
		Blackbird of Wye Umf 7816

Octoraro Blackbird 932 is a 2½ year old of Loast of Wye, and she has a straight Wye pedigree with good females all the way back through her pedigree. She was bred by Octoraro Emulation 505 16540617.

Octoraro Miss Wix 919

Cow 16553741 TATTOO 919 04/10/2009

	PBC 707 1M F0203	R R Rito 707
Octoraro Rito 503 AAA +13251454	Octoraro Delia 503	Evocate Princess T
		Emulation 31
		Octoraro Delia 310
		O C C Anchor 771A
Octoraro Miss Wix 523	Octoraro Allegheny 203	Octoraro Gammer 203
	Octoraro Miss Wix 228	Octoraro Addison 203
		Octoraro Miss Wix 032

Octoraro Miss Wix 919 had the misfortune of losing a month old baby calf, this late spring, due to pneumonia. She should be rebred to freshen in April or May to Octoraro Earl 326. 16852068

Consignment Cattle

Octoraro Epiphany Delia 709

Cow 16856018 TATTOO 709 04/09/2007

Octoraro Addison 203	O C C Anchor 771A
Octoraro Addison 723	Octoraro Gammer 203
Octoraro Delia 723	Octoraro Intention 135
	Octoraro Delia 503

Octoraro Addison 203	O C C Anchor 771A
Octoraro Delia 351	Octoraro Gammer 203
Octoraro Delia 454	Octoraro Stackalong 305
	Octoraro Delia 723

Octoraro Epiphany Delia 709 is a very beautiful, functional good uddered daughter of our Addison 723 bull. She is a double bred Addison and double bred Delia 727. She produces consistently and has never missed a beat. She is carrying a natural service for April/May to Octoraro Cedric 715 16851913.



Octoraro Epiphany Delia 709



Octoraro Epiphany Delia 710

Octoraro Epiphany Delia 710

Cow 16856020 TATTOO 710 03/31/2007

Octoraro Addison 203	O C C Anchor 771A
Octoraro Addison 723	Octoraro Gammer 203
Octoraro Delia 723	Octoraro Intention 135
	Octoraro Delia 503

D D A Fahren 21X	Fahren of Wye Umf 5830
Epiphany Place Delia 501	D D A Melisa 549
Octoraro Delia 931	Octoraro Echo 810
	Octoraro Delia 607

Octoraro Epiphany Delia 710 is another Addison linebred Delia and also is a good bodied, cow moderate in frame, fancy uddered and has never missed a lick. Addison 723's dam was a tremendous, long lived cow. Addison has transmitted her maternal goodness, very consistently, to his offspring. These three are the only daughters that he sired for us or Beth. Later he was sold to James Coffelt in Ohio. 710 is rebred, natural service, for an April/May calf to the Octoraro Cedric 715 16851913.

Octoraro Epiphany Ms Wix 711

Cow 16856019 TATTOO 711 04/16/2007

Octoraro Addison 203	O C C Anchor 771A
Octoraro Addison 723	Octoraro Gammer 203
Octoraro Delia 723	Octoraro Intention 135
	Octoraro Delia 503
	Emulation 31
Octoraro Emulation 310	Octoraro Delia 310
Octoraro Miss Wix 366	
Octoraro Miss Wix 128	Octoraro Addison 203
	Octoraro Miss Wix 920

Octoraro Epiphany Miss Wix 711 is another good Addison 723 daughter out of our outstanding 366 cow, the dam and granddam are foundation donor cows in our herd. This is another of the top sale cows, this year, and is carrying a natural service to Octoraro Cedric 715 16851913 for an April/May calf.



Octoraro Epiphany Ms Wix 711



Em Brook Farm
Rick Emerick 814-937-7867 or 814-733-4552

Spring Calving Cows

Em Brook Miss Burgess 701

Cow 15851385 TATTOO 701 01/22/2007

<p>KA Messenger 427 KA Powerade 221 KA Blackcap 602</p> <p>G A R Grid Maker 7132 KA Miss Burgess 545 KA Miss Burgess 723</p>	<p>Jauer 353 Traveler 593 25 KA Miss Burgess 175</p> <p>Shoshone Encore 6310 KA Blackcap 912</p> <p>G A R Grid Maker G A R 6148 Emulation 1379</p> <p>K A Tonto 333 K A Miss Burgess 424</p>
--	--

Em Brook Burgess 701 is one of 2 cows in our offering sired by our 221 Powerade (14955727) bull. 701 is known as Janey to us, a name she acquired as a calf. 701 has a great disposition to go with her personality as a lead cow. She has a good udder and has weaned 3 top calves in her time with us with a yearling weight ratio of 108%. A-I Bred to Pinebank Waigroup 41/97 (14959541) on 6/15/2011. Pasture exposed to Em Brook Glanworth 708 (16489038) 6/29 – 9/4/2011.



Em Brook Miss Wix 702

Cow 15991816 TATTOO 702 04/06/2007

<p>Pinebank Waig 31/95 Pinebank Waigroup 41/97 Pinebank 639/88</p> <p>Octoraro Anchor 750 Octoraro Miss Wix 237 Octoraro Miss Wix 038</p>	<p>Pinebank Waig 5/93 Pinebank Waig 58/93</p> <p>Tupurupuru 838/86 Pinebank 663/85</p> <p>O C C Anchor 771A Octoraro Gammer 750</p> <p>Octoraro Travelmaster 906 Octoraro Miss Wix 803</p>
---	--

Em Brook Miss Wix 702 is one of 3 daughters in the sale out of the New Zealand grassland bull Pinebank Waigroup 41/97 (14959541). 702 is out of our 237 cow, still active in our herd at 9 years old. She is serviced to our New Zealand bull Em Brook Glanworth 708 bull for an early April calf. Pasture exposed to Em Brook Glanworth 708 (16489038) 6/29 – 9/4/2011.

Em Brook Miss Wix 703

Cow 15851376 TATTOO 703 04/07/2007

Shoshone Prestin 203-7503 KA 7503-508	Horse Butte 1126 of 3128 Shoshone Prudence 7503
K A Queen Mother 1013	K A Encore 492 K A Queen Mother 405
Octoraro Eureka 814 Em Brook Miss Wix 501	O C C Eureka 865E Octoraro Delia 814
Octoraro Miss Wix 143	Hodge Redefine 68 Octoraro Miss Wix 832

Em Brook Miss Wix 703 is the total package sired out of the 508 Encore (15294722) bull we own with Larkota Angus in Kimball South Dakota. Her Dam is Em Brook Miss Wix 501 which was purchased in 2009 by Somerville Farms in Mitchell, Virginia. We call 703 April just like her Dam and she has all the same traits – great udder, disposition and performance to match her Dam. 703 will be a great addition to your herd. She was A-I bred to Sam's Ballot 6 (15521058) bull on 6/15/2011. Pasture exposed to Em Brook Glanworth 708 6/29 – 9/4/2011.



Em Brook Delia 704

Cow 15991817 TATTOO 704 04/08/2007

Pinebank Waig 31/95 Pinebank Waigroup 41/97 Pinebank 639/88	Pinebank Waig 5/93 Pinebank Waig 58/93 Tupurupuru 838/86 Pinebank 663/85
Octoraro Rito 054 203 Octoraro Delia 216 Octoraro Delia 861	D H D Traveler 6807 Octoraro Gammer 203 R R Chevis 3432 Octoraro Delia 503

Em Brook Delia 704 is another Pinebank Waigroup 41/97 daughter. She has been a very productive cow from Sam's Delia cow family. 704 just weaned a top bull calf out of Sam's Octoraro Embassy 401 (16255680) bull. She has been a good steady cow for us. A-I bred to our Encore 508 (15994722) on 6/15/2011. Pasture exposed to Em Brook Glanworth 708 6/29 – 9/4/2011

Em Brook Esterine 705

Cow 15991818 TATTOO 705 04/09/2007

Pinebank Waig 31/95	Pinebank Waig 5/93
Pinebank Waigroup 41/97	Pinebank Waig 58/93
Pinebank 639/88	Tupurupuru 838/86
	Pinebank 663/85
Octoraro Rito 054 203	D H D Traveler 6807
Octoraro Esterine 213	Octoraro Gammer 203
Octoraro Esterine 927	Octoraro Echo 810
	Octoraro Esterine 604

Em Brook Esterine 705 is the 3rd daughter out of the Pinebank 41/97 in our offering. 705 has one of our best calving intervals in our herd. She weaned a bull calf out of our 221 bull that we are keeping for our 2012 bull sale. This is a good functional cow for your herd. We liked her bull calf enough to A-I her again to our Powerade 221 (14955727) bull on 6/14/2011. Pasture exposed to Em Brook Glanworth 708 6/29 – 9/4/2011.



Em Brook Delia 708

Cow 15851377 TATTOO 708 04/13/2007

	Horse Butte 1126 of 3128
Shoshone Prestin 203-7503	Shoshone Prudence 7503
KA 7503-508	
K A Queen Mother 1013	K A Encore 492
	K A Queen Mother 405
Octoraro Emulation 310	Emulation 31
Octoraro Delia 453	Octoraro Delia 310
Octoraro Delia 219	Octoraro Rito 054 203
	Octoraro Delia 804

Em Brook Delia 708 is a Encore 508 daughter. Her Dam Octoraro Delia A53 sold to Somervilla Farms in Mitchells, Virginia also in the 2009 sale. Octoraro Delia 219 is the grand Dam for 708 is still at Em Brook in her 9th year. Both have been very productive, well uddered females in our program, built for the long haul. A-I bred to Pinebank Waigroup 41/97 (14959541) out of New Zealand. Pasture exposed to Em Brook Glanworth 708 6/29 – 9/4/2011

Em Brook Queen Missie 711

Cow 15851378 TATTOO 711 04/17/2007

O C C Legend 616L	O C C Emblazon 854
Em Brook Legend 926	O C C Blackbird 632J
Octoraro Miss Wix 926	Shoshone Eros 1702
	Octoraro Miss Wix 719
Octoraro Addison 203	O C C Anchor 771A
Octoraro Queen Missie 314	Octoraro Gammer 203
Octoraro Queen Missie 950	Shoshone Eros 1702
	Octoraro Queen Missie 401

Em Brook Queen Missie 711 is a very complete and feminine daughter out of our 314 cow and sired by our Em Brook Legend 926 (14948965) bull. This combination brings the perfect blend of calving ease and productivity. Although 314 is still at Em Brook, unfortunately the 926 bull is gone, so this is the last of this combination. 711 may be the sleeper of the sale, always A-I bred. 711 weaned a great 310 heifer in 2011. A-I bred for 2012 to Sam's Ballot 6 bull, will continue calving ease. Pasture exposed to Em Brook Glanworth 708 bull 6/29 – 9/4/2011.



Em Brook Queen Missie 734

Cow 15851381 TATTOO 734 04/30/2007

O C C Legend 616L	O C C Emblazon 854E
Em Brook Legend 926	O C C Blackbird 632J
Octoraro Miss Wix 926	Shoshone Eros 1702
	Octoraro Miss Wix 719
Octoraro Addison 203	O C C Anchor 771A
Octoraro Queen Missie 132	Octoraro Gammer 203
Octoraro Queen Missie 909	Octoraro Echo 810
	Octoraro Queen Missie 619

Em Brook Queen Missie 734 is another Legend 926 sired cow out of our Octoraro Queen Missie 132 cow. 132 is in her 10th year with 9 calves on a 367 day calving interval. 734 has matched her Dam in 3 calving seasons. 2011 weaned a Elrod 49 bull calf held over for the spring sale. We liked the 2011 results so well; we bred 734 back to the Elrod 49 bull again for 2012. Observed bred on 7/17/2011 by Elrod 49. Pasture exposed 6/29 – 9/4/2011 to the 49 bull.

Em Brook Queen Missie 743

Cow 15863835 TATTOO 743 05/13/2007

Emulation 31	F C R Elation Lad 652
Octoraro Emulation 310	Miss Emulous 243
Octoraro Delia 310	Shoshone Viking GD60
	Octoraro Delia 810
Octoraro Addison 203	O C C Anchor 771A
Octoraro Queen Missie 232	Octoraro Gammer 203
Octoraro Queen Missie 014	K A Forager 576
	Octoraro Queen Missie 717

Em Brook Queen Missie 743 is a very fancy Octoraro Emulation 310 (12975036) daughter out of a very functional Queen Missie 232 cow. Like her Dam 743, she is a very complete, good uddered cow. She has weaned top calves each year in of our herd. This year's bull calf out of Sam's 401 bull is a keeper for the spring sale. A-I bred to Sam's Ballot 6 bull 6/15/2011. Pasture exposed to Em Brook Glanworth 708 6/29 – 9/4/2011.



Em Brook Miss Wix 755

Cow 16074664 TATTOO 755 10/15/2007

K A Messenger 427	Jauer 353 Traveler 593 25
KA Powerade 221	K A Miss Burgess 175
K A Blackcap 602	Shoshone Encore 6310
	K A Blackcap 912
Octoraro Hero 603	R R Hero 6267
Octoraro Miss Wix 020	Octoraro Delia 603
Octoraro Miss Wix 624	Octoraro Bandmaster 401
	Octoraro Miss Wix 318

Em Brook Queen Missie 755 is our feature cow in this year's sale. See for yourself, a great package sired by the Powerade 221 bull with the Miss Wix 020 cow. The Powerade 221 bull is in Spencer, IA where he has blossomed into a great cow maker for AC Schueneman and family. 755 is at the top of 221's prodigy list, udder, disposition, good top and feet – legs to go. 755 is built for our times. For good measure, we A-I bred 755 to Sam's great cow maker bull Emulation 310 (12975036). Pasture exposed to Em Brook Glanworth 708 6/29 – 9/4/2011.

Fall Calving Cows

Em Brook Queen 735

Cow 15851382 TATTOO 735 05/02/2007

	Horse Butte 1126 of 3128
Shoshone Prestin 203-7503	Shoshone Prudence 7503
KA 7503-508	
K A Queen Mother 1013	K A Encore 492
	K A Queen Mother 405
	G A R Grid Maker
G A R Grid Maker 7132	G A R 6148 Emulation 1379
KA Queen 535	
K A Queen 1060	K A Tonto 333
	K A Queen 324

Em Brook Queen 735 is a very attractive fall calving daughter out of our 508 Encore bull we own with Larkota Angus in South Dakota. Her Dam 535 was sold in 2010 to Gary & Alice Strader in Rock Cave West Virginia. 735 sells with a nice lively heifer out of our Elrod 49 (16467018) bull. 735 is out of a good cow family and is a good kind of working cow.

Em Brook Delia 741

Cow 15851383 TATTOO 741 05/11/2007

	O C C Emblazon 854E
O C C Legend 616L	O C C Blackbird 632J
Em Brook Legend 926	
Octoraro Miss Wix 926	Shoshone Eros 1702
	Octoraro Miss Wix 719
	Shoshone Eric 1701
Shoshone Eros 1702	Shoshone Erica LJFC17A
Octoraro Delia 902	
Octoraro Delia 725	Emulation 31
	Octoraro Delia 511

Em Brook Delia 741 is a very good, high capacity brood cow with a great udder, sired by our Legend 926 (14948965) bull with a +10 calving CED ease direct. 741 is a carbon copy of her Dam – our Octoraro Delia 902 cow, in her 12th year with 11 calves on a 367 day calving interval. We think 741 has this capability. 741 calved on 9/18/2011 with a great bull calf by our Elrod 49 (16467018) bull.



Service Sires

Octoraro Ritolation 301

Bull 16666794 TATTOO 301 05/02/2009

	Rito 054 G D A R	C S U Rito 4114
Octoraro	Ritolation 2503	Blackcap Forever 485 G D A R
	Octoraro Delia 503	Emulation 31
		Octoraro Delia 310
	Shoshone Viking GD60	Franchester of Wye
Octoraro	Delia 301	Shoshone Wendy D60
	Octoraro Delia 503	Emulation 31
		Octoraro Delia 310

We are very enthused about the transmitting ability of this double grandson of Delia 503. He is the service sire on our fall calving females and bred 44 heifers this year.

Octoraro Earl 326

Bull 16852068 TATTOO 326 04/14/2010

	Betro of Classlochie	Rockie of Woodview
Dunlouse	Jipsey Earl E161	Bethrothed 19 of Classlochie
	Dunlouse Jipsey Clova C095	Bernardo of Classlochie
		Cannahars Jipsey Yoko Y485
	Octoraro Emulation 310	Emulation 31
Octoraro	Queen Missie 326	Octoraro Delia 310
	Octoraro Queen Missie 111	O C C Galileo 754G
		Octoraro Queen Missie 718

Several spring calving cows carry his service. His mother is the epitamy of functional efficiency.

Octoraro Cedric 715

Bull 16851913 TATTOO 715 04/08/2010

	Andelot of Wye Umf 5907	Federal of Wye
Cedric of	Wye UMF 8998	Arbutus of Wye
	Clova of Wye Umf 8044	Churchill of Wye
		Clova of Wye Umf 7665
	Octoraro Emulation 310	Emulation 31
Octoraro	Delia 715	Octoraro Delia 310
	Octoraro Delia 509	Shoshone Viking GD60
		Octoraro Delia 151

Beth's three spring calving cows are serviced to this good yound son of Cedric.

Octoraro Embassy 203

Bull 16255674 TATTOO 203 04/06/2008

Pinebank Waig 31/95	Pinebank Waig 5/93
Pinebank Waigroup 41/97	Pinebank Waig 58/93
Pinebank 639/88	Tupurupuru 838/86 N
	Pinebank 663/85
Rito 054 G D A R	C S U Rito 4114
Octoraro Gammer 203	Blackcap Forever 485 G D A R
Octoraro Gammer 305	Shoshone Viking GD60
	Octoraro Gammer 008

This bull was used clean up service sire this past summer with three sale females carrying his service. He is out of our grand old Gammer 203 cow.

Octoraro Embassy 128

Bull 16842775 TATTOO 128 04/15/2010

	Pinebank Waig 31/95
	Pinebank 639/88
Octoraro Embassy 301	
Octoraro Delia 301	Shoshone Viking GD60
	Octoraro Delia 503
Octoraro Addison 203	O C C Anchor 771A
Octoraro Miss Wix 128	Octoraro Gammer 203
Octoraro Miss Wix 920	Shoshone Eros 1702
	Octoraro Miss Wix 714

Embassy 128 is out of our grand old Addison 128 cow and is serviced to three different sale cows.

Octoraro Emulation 505

Bull 16540617 TATTOO 505 04/11/2009

	F C R Elation Lad 652
	Miss Emulous 243
Octoraro Emulation 31	
Octoraro Emulation 310	Shoshone Viking GD60
Octoraro Delia 310	Octoraro Delia 810
O C C Eureka 865E	O C C Backstop 888B
Octoraro Miss Wix 505	Blackbird of R R 1204
Octoraro Miss Wix 207	O C C Emblazon 854E
	Octoraro Miss Wix 803

Emulation 505 is a full brother to feature sale cow 714 and will be service sire on three of the fall calving heifers.

Sinclair Emulation 5522 XP

Bull 15696693 TATTOO 7F6 04/06/200

Emulation 31	F C R Elation Lad 652
Emulation N Bar 5522	Miss Emulous 243
Ankony 8F78 Lass 8F275	Ankonian Dynamo 27542
	Ankony B999 Lass 26832
N Bar Emulation EXT	Emulation N Bar 5522
N Bar Primrose Y3051	N Bar Primrose 2424
N Bar Primrose 2429	Nichols Trademark S1
	Primrose N Bar 9962

A line bred Emulation bull that we used A-I on our Emulation females. He is a product of the Sinclair flush program with his dam being the most prolific flush cow. We have high hopes for these matings.



Em Brook Glanworth 708

Bull 16489038 TATTOO 708 03/28/2009

Glanworth 159	Glanworth 903
Glanworth Waigroup 130-03	Glanworth 950
Glanworth Waig 849	Glanworth Waigroup 635
	Glanworth Waigroup 611
KA 7503-508	Shoshone Prestin 203-7503
Em Brook Delia 708	K A Queen Mother 1013
Octoraro Delia 453	Octoraro Emulation 310
	Octoraro Delia 219



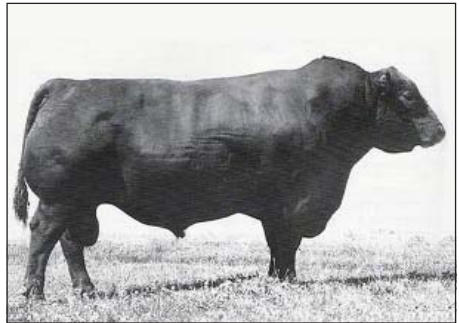
Fabron of Wye



Lodge of Wye GDF



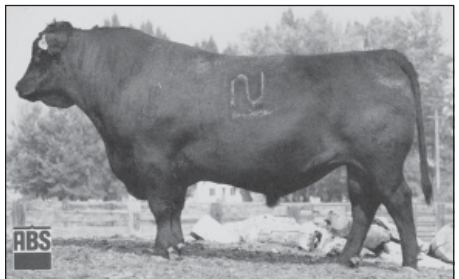
Emulation 31



RR Rito 707



Shoshone Viking GD60 GDF



N Bar Emulation 5522

For a number of years Octoraro Angus has gathered frozen semen on many of the old pillar bulls of the breed. In recent years there have been strong inquiries about purchasing semen out of our cache. Therefore, we have decided to offer you semen on twelve of the best, old, maternal efficiency bulls, some of which are proven defect free. There will be two units offered per bull, except for 707. We would recommend that due to the rareness, uniqueness and scarcity of this semen that you only use one unit per flush or IVF. There are reserves on all semen packages.

DIRECTIONS TO THE FARM

OCTORARO ANGUS IS LOCATED
APPROXIMATELY 20 MILES FROM BEDFORD, PA
12 MILES SOUTHEAST OF EVERETT, PA

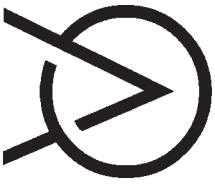
FROM THE WEST: Pennsylvania Turnpike - Bedford Exit 146. Go east on Route 30 approx. 9 miles to downtown Everett. At second traffic light turn right on Route 26 south. Go 3.5 miles and turn left onto West Mattie Road. Follow state road with yellow center line six miles to Mattie. Straight through Mattie, go one mile, take first right onto Robinsonville Road. Go one mile and at Stevens Chapel turn right onto Snyder Road. Then, first left to stay on Snyder. One mile to farm.

FROM THE EAST: Pennsylvania Turnpike - Exit 161, Breezewood. Take Route 30 West, turn left at last traffic light. McDonalds will be on your left. Go ½ mile turn right onto east Mattie Road. Turn left in Mattie. Go one mile, take first right onto Robinsonville Road. Go one mile and at Stevens Chapel turn right onto Snyder Road then first left to stay on Snyder. One mile to farm.

FROM THE SOUTH: Take Exit 70 West at Crystal Srings. Take right at stop sign, go under I70 to first right. Go north through the gap in the ridge, past the VFW to the first road left, Oak Grove Road, cross the bridge, then make a left at the forks to stay on Oak Grove. At the stop sign, turn left onto Robinsonville Road. Turn right at Stevens Chapel onto Snyder Road and then left to stay on Snyder Road.

Rare Semen Offering

A	1 Units	RR Rito 707 5770651	
B	2 Units	(Rito 149) Rito 707 of Ideal 53370 6810901	
C	2 Units	PBC 707 1M F0203 8252710	
D	2 Units	Rito Excel 809 8781383	
E	2 Units	Emulation 31 6064368 FX	
F	2 Units	N Bar Emulation 5522 10095939	
G	2 Units	Fabron of Wye 2467117	
H	2 Units	Lodge of Wye 4020202 GDF	
I	2 Units	Manning of Wye 6428926	
J	2 Units	Fahren of Wye 10762574	
K	2 Units	Shoshone Viking GD60 8805991 GDF	
L	2 Units	Shoshone Beauigan 9251108	



Sam & Sherrill Wylie
216 South Snyder Road
Breezewood, PA 15533